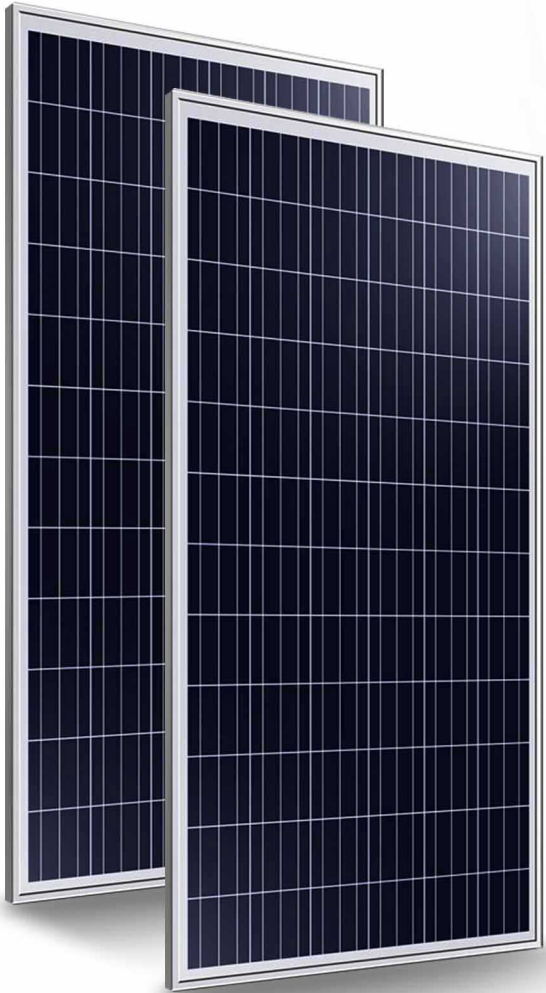









SOLA CELL

POLY 320W



POLY SOLAR MODULE 156*156

-  Plus power tolerance (0-3%) to ensure the high reliability of power output
-  Modules certified by TÜV to withstand high level of wind loads (2400 Pa) and snow loads (5400 Pa)*
-  Anti-reflective, hydrophobic layer of module surface (proprietary 800° C online coating technology) improves light absorption and reduces surface dust
-  Easy installation and minimal maintenance with compatibility to industry standard inverters and mounting systems
-  Special PV Module Insurances by world leading insurance company guarantees the benefit of PV investors and PV module users
-  Junction box and bypass diodes guarantee the modules free of overheating and “hot spot effect”
-  Modules’ excellent performance under low light environments (mornings, evenings, and cloudy days) create better kWh/kW ratio and produce average 2-3% more electricity in the field

PRODUCT FEATURE

- Bypass diode minimizes the power drop by shade.
- White tempered glass ,EVA resin,weather proof film and anodized aluminum frame to provide efficient protection from the severest environmental conditions.
- Waterproof.Perfect for grid applications.
- Product guarantee 10 years.

Quality Assurance

- Electrical Insulation test
- Outdoor exposure test
- Hot-spot endurance test
- UV-exposure
- Thermal cycling test
- Humidity freeze test
- Damp heat Test
- Robustness of termination test
- Wet leakage current test
- Mechanical load test
- Hail impact test
- Bypass diode thermal test

Physical Specifications

Dimension: 1956*992*35MM

Weight: 21KG/PCS

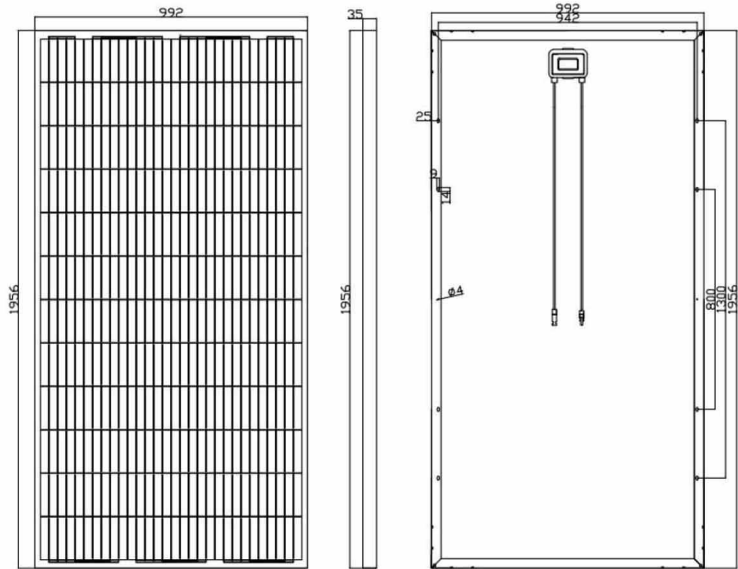
Packing : 2pcs in one carton

Loading Capacity:

240pcs/ 20' Container

516pcs/ 40' Container

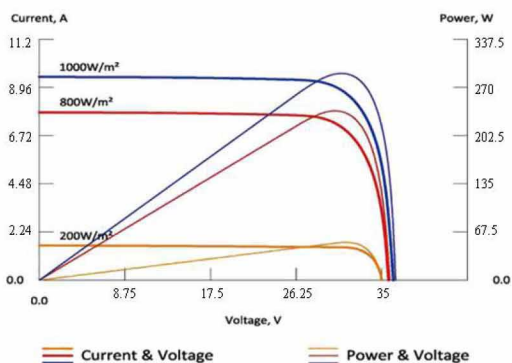
582pcs/ 40' HQ



PRODUCT SPECIFICATION	SY-72-310WP	SY-60-320WP
Maximum Power (W)	310	320
Tolerance (%)	0/+3%	0/+3%
Open Circuit Voltage (V)	45.5	45.7
Short Circuit Current (A)	8.7	8.94
Maximum Power Voltage (V)	37.5	37.7
Maximum Power Current (A)	8.27	8.49
Module Efficiency (%)	15.95	16.5
Solar Cell Efficiency (%)	17.7	18.3
Series Fuse Rating (A)	15	15
Terminal Box	IP65	IP65
Maximum system voltage (V)	DC1000	DC1000
Operating Temperature(°C)	-40°C---85°C	-40°C---85°C

Electrical Characteristics

Current-Voltage & Power-Voltage characteristics various irradiance levels



Electric Performance Typical Performance Characteristics

Current Temperature Coefficient	%/°C	+0.06
Voltage Temperature Coefficient	%/°C	-0.34
Power Temperature Coefficient	%/°C	-0.47
Performance Warranty : 12 years,90%output , 25years,80%output,		